



# MMAIRO

## Index

<b>KAREN CHEKARDJIAN</b>	4	<b>MATTEO CIBIC</b>	37
TOTEM	5	HOMAGE COLLECTION	38
INSIDE OUT COLLECTION	8		
<b>IVAN COLOMINAS</b>	13	<b>ARTHUR ARBESSER</b>	45
TIVOLI COLLECTION	14	MASTERS COLLECTION	46
ALTANA COLLECTION	20		
CAPUA COLLECTION	22	<b>JACOPO SIMONETTI</b>	48
PYXIS COLLECTION	23	ARMONIA	49
MATERIA E TAVOLA COLLECTION	24	THE REEF LIGHT COLLECTION	54
<b>BEC BRITTAIN</b>	29	<i>TECHNICAL INFO</i>	56
HERON	30	<i>MARBLES' LIST</i>	64
		<i>COLLABORATIONS</i>	66
<b>NIKO KORONIS</b>	32	<i>SPECIAL COLLABORATIONS</i>	67
BRUCHI	33	<i>PRESS</i>	68
		<i>ABOUT US</i>	69
<b>VENELIN KOKALOV</b>	35		
LUNA TABLE	36		

Established in Carrara in 2016, MMairo designs and produces marble objects in Tuscany. The products are made with superior quality marbles, hand finished by local artisans and with a high market positioning.

The Company takes its name from the etymological origin of marble (the Greek verb *marmairo*, "to shine"): a clear homage to the artistic material par excellence, the platonic idea of beauty, matter that is constantly evolving and therefore ever modern, invincibly contemporary, ecumenical, never identical to itself and thus reason malleable in the hands of designers, artists and architects, fascinating and desirable in the eyes of the public.

For its collections, MMairo has selected international and heterogeneous authors whose private imaginings transform objects that range

from the mundane, used for cooking and dining, into vases, centrepieces, lamps and tables. Fine materials, such as marble that nature supplies, never forfeit their uniqueness for a shared label. For this reason, MMairo resolved to create its own identity: solid, tangible, recognisable through original and contemporary objects that complement an eclectic element born in history, and that will always be, marble.

It all begun in Carrara, international capital of marble, in the steady embrace of the Apuan Alps, where MMairo has made its home to oversee the quarrying and processing of this pure gift of nature. The Apuan Alps' heritage is beauty, and MMairo has been able to harness the area's deep roots to build relationships with local manufacturers, sharing dust and sunsets; because expertise on the subject is the first step towards artistic creation.



## KAREN CHEKERDJIAN

Karen's trajectory into designing was unsystematic, comprised of a combination of practical experience in various creative fields and endeavours.

After an experience at Leo Burnett Beirut (1991), she moved to Milan in 1997 to pursue a master's degree in industrial design at DOMUS academy, under the guidance of Massimo Morozzi, a founder of Archizoom. She continued to work with Morozzi at EDRA for four years before establishing her own brand.

Her creations have been showed in several museums, foundations, galleries and international fairs. Her famous "Totem" is part of the permanent collection of the Musée des Arts Décoratifs in Paris.

DESIGNER

---



## TOTEM

KAREN CHEKERDJIAN

TOTEM is not a work of design, but a search for balance between fullness and emptiness, between heaviness and lightness. Intuition leads to desire, which generates an idea. The idea evaporates, but the object endures. TOTEM remains essential. Three simple geometric shapes, stacked in varying sequences, like bricks. Playing the game recalls the effortless act towards spiritual harmony, between functionality and futility, between form and the absence of form.





TOTEM

Numbered Edition

Technical Info [+](#)



00039BN



00039BP

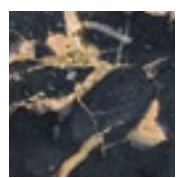


00039X

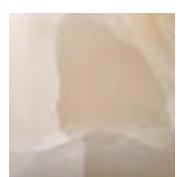
MARBLES



NERO ANTICO



PORTORO



ONICE BIANCO





TOTEM

Numbered Edition

+ Technical Info



00039BI



00039BRI



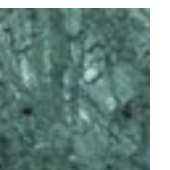
00039S

MARBLES

NERO MARQUINIA



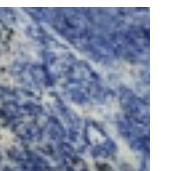
VERDE IMPERIALE



ROSSO LEVANTO



BLU SODALITE





## INSIDE OUT COLLECTION

KAREN CHEKERDJIAN

The value of change in a simple act. Karen Chekerdjian's creation puts design front and centre: from one foundation, multiple possibilities. Always in pursuit of colour which, more than ever before, enhances the purity of the shapes.

Bursting with undeniable energy courtesy of the marble they are made of, the tables and console of Inside Out Collection can change from vase to candle holder to fruit basket – the top element defines its function without distorting the convivial nature of a piece that's perfect for the contemporary living room.

The accessories can be a top element as well as exquisite items to personalise our surroundings.





INSIDE OUT  
SIDE TABLE

+ Technical Info



00064RB/00064RBbt



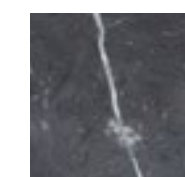
00064BR/00064BRbt

MARBLES

ROSSO LEVANTO



NERO MARQUINIA





---

INSIDE OUT  
DINING TABLE

---

Technical Info [+](#)



00069E

MARBLES



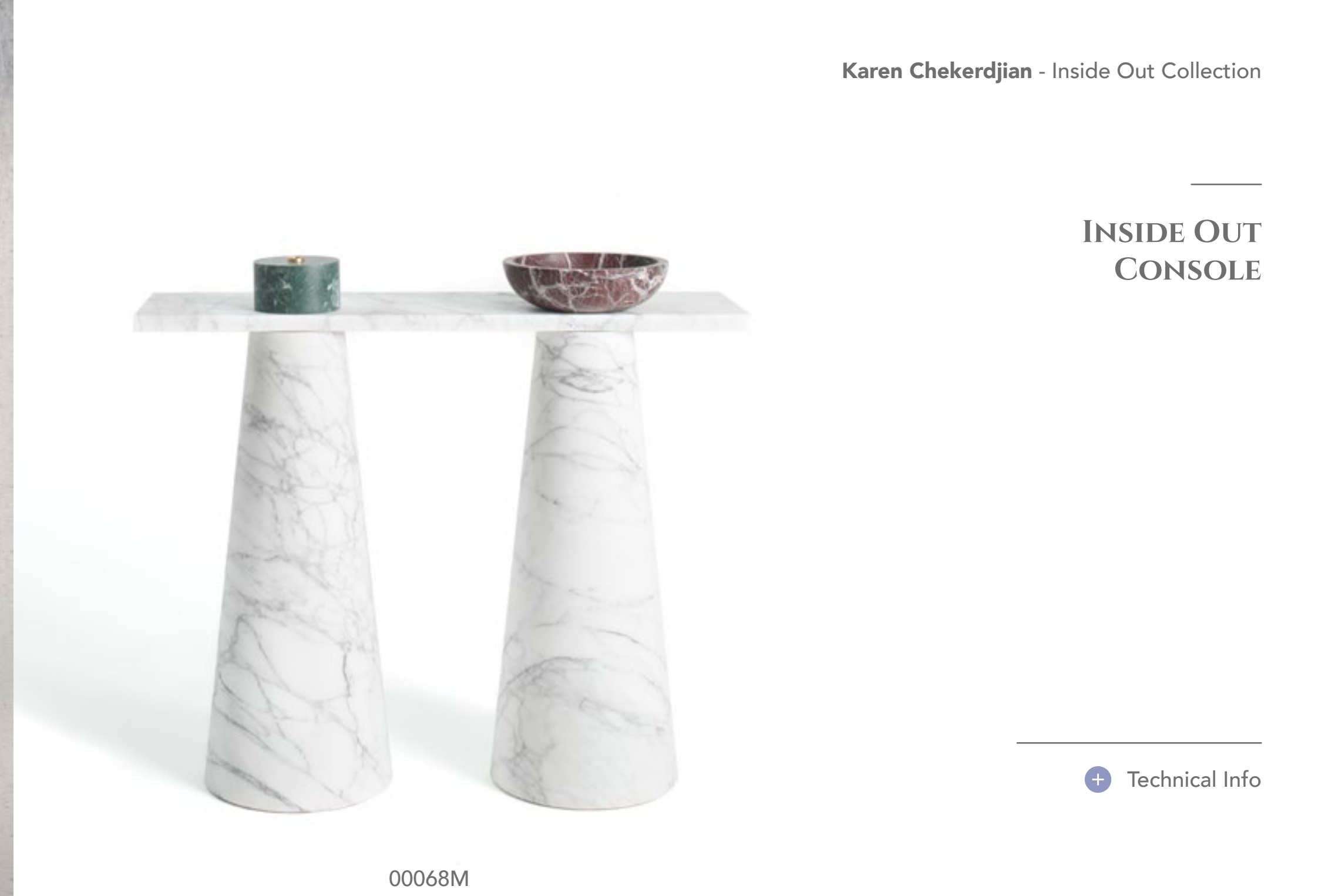
ROSA EGIZIANO





INSIDE OUT  
CONSOLE

[+ Technical Info](#)



00068M



00068T

MARBLES

BIANCO ARABESCATO



TRAVERTINO







• Index •

### INSIDE OUT FRUIT BOWL

Karen Chekerdjian - Inside Out Collection



00065S



00065R



00065B



00065TB



00065P



00065M

[+ Technical Info](#)

### INSIDE OUT CANDLE HOLDER

MARBLES



00066G



00066R



00066B

SODALITE BLU 

ROSSO LEVANTO 

NERO MARQUINIA 

TOBACCO MARRONE 

FIOR DI PESCO CARNICO 

BIANCO ARABESCATO 

VERDE IMPERIALE 

### INSIDE OUT FLOWER VASE



00067S



00067R



00067B



00067P





**DESIGNER**

---

## IVAN COLOMINAS

He studied industrial design at the UCH-CEU in Valencia, where he also attained a Master's of Transportation Design. The collaboration with several international firms has, in recent years, led him to work across a diverse range of sectors: from automotive, to sporting goods and home accessories.

His design research is heavily influenced by XX century iconography: focussed on delivering products that, while belonging to a digital age, convey analogue qualities. Colominas' work has garnered six Red Dot Awards and has been published in specialised media worldwide.



## TIVOLI COLLECTION

IVAN COLOMINAS

TIVOLI, a picturesque city situated on the western slopes of the Sabine Hills, was the place that the Ancient Rome's elite choose to enjoy the pleasant life in the countryside, in their wealthy residences. Among this magnificence, in the river next to the city, was hidden a treasure, the oldest and most famous Travertine marble, a natural stone present throughout the history of Italian architecture, both as a building material and decoration, that gave us the splendour of the Colosseum. Ivan Colominas pays tribute to the generosity and history of this exquisite stone, in his new collection that evokes the gem of Tivoli. Tables, together with stool, vases and centerpieces. An harmonious embrace between smooth lines and wonderful materials: Travertino Navona with wood or with a new delightful shade of marble, the Emperor Dark. A feast for the eyes to celebrate the essence of beauty.









Tivoli Table S  
(walnut top)

00096TNLN



Tivoli Table S  
(marble top)

00096TNBE



Tivoli Table L  
(walnut top)

00097TNLN



Tivoli Table L  
(marble top)

00097TNBE

## TIVOLI TABLE

[+ Technical Info](#)

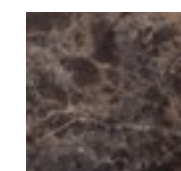
### WOOD

WALNUT  
WOOD



### MARBLES

EMPERADOR  
DARK



TRAVERTINO  
NAVONA





TIVOLI STOOL

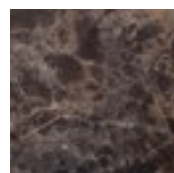
Technical Info +

WOOD

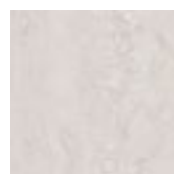


WALNUT WOOD

MARBLES



EMPERADOR DARK



TRAVERTINO NAVONA

Tivoli Stool (walnut top)



00095TNLN

Tivoli Stool (marble top)



00095TNBE





TIVOLI CENTREPIECE



[+ Technical Info](#)

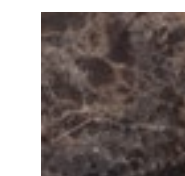
Tivoli Centrepiece  
(marble)



00100TNBE

MARBLES

EMPERADOR  
DARK



TRAVERTINO  
NAVONA





TIVOLI VASE

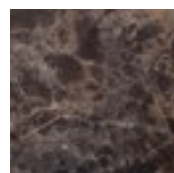
Technical Info +

WOOD

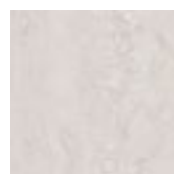


WALNUT WOOD

MARBLES



EMPERADOR DARK



TRAVERTINO NAVONA

Tivoli Vase S (walnut neck)



00098TNLN

Tivoli Vase S (marble neck)



00098TNBE

Tivoli Vase L (walnut neck)



00099TNLN

Tivoli Vase L (marble neck)



00099TNBE





## ALTANA COLLECTION

IVAN COLOMINAS

Like the turret-like rooftop terraces we find in Renaissance homes, *Altana* is a table design that accepts no boundaries – round all over, with no beginning nor end. Volume acting as a base and a flat table top – a depiction of the “terrace” from which objects can view their surroundings without the risk of falling.







• Index •

Ivan Colominas - Altana Collection

ALTANA SMALL  
MEDIUM/LARGE



00077RA



00077T



00077B



00078T



00078B



00079B



00079T

[+ Technical Info](#)

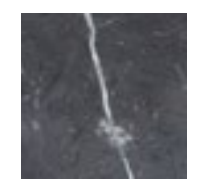
MARBLES



ROSSO  
ALICANTE



TRAVERTINO



NERO MARQUINIA



# CAPUA

IVAN COLOMINAS

A vase that's an homage to design and to marble itself: the Marquinia veins look skyward, toward the crater defined by round shapes and sinuous profiles, toward the reinterpretation of the artistic artefact, toward Greek and Roman tradition, toward Renaissance sculpture. The light of history shines down on a modern masterpiece that defies the myth to contain all the goods in the world.



## CAPUA L



00061B

[+ Technical Info](#)

## CAPUA M



00060B

MARBLES

NERO MARQUINIA





PYXIS S



00040B



00040A

PYXIS M



00041B



00041A

PYXIS L



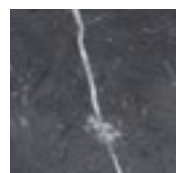
00042B



00042A

Technical Info +

MARBLES



NERO MARQUINIA



BIANCO MICHELANGELO

PYXIS COLLECTION

IVAN COLOMINAS

A refined collection articulated through cylinders that vary only in size and doesn't ignore that the best ally in the thorough organization of a space is the container, which thanks to minute details, becomes increasingly ours.





## MATERIA E TAVOLA COLLECTION

IVAN COLOMINAS

MMairo loves wining and dining, good food and entertaining and, it loves marble. In the kitchen it is the perfect material: pure, smooth and easy to clean. Far from the monumentality by which it can be defined, this luxurious material has been shaped for an elegant table and impeccable service, into creative and unambiguous forms by the imagination of Spanish designer Ivan Colominas. The collection is a tribute to one of Italy's great masters of design and architecture: Angelo Mangiarotti, creator of symbolic, marble design pieces, who is closely connected to the Apuan region and its craftsmen. The essential is visible, with a collection that offers infinite applications: serving, decorating, presenting, containing, tasting. The "material is served", flawless and delectable.





AMALTEA

+ Technical Info

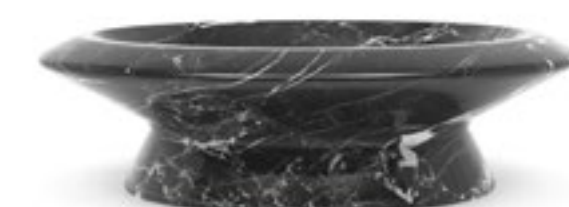
MARBLES



00001A



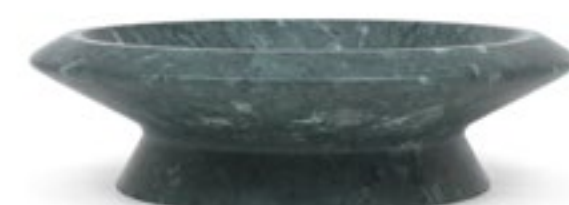
00001B



00001BN



00001BP



00001G



00001R



00001M

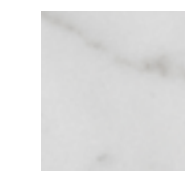


00001X



00001S

BIANCO MICHELANGELO



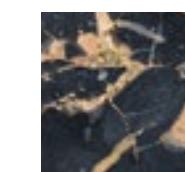
NERO MARQUINIA



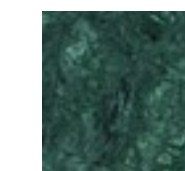
NERO ANTICO



NERO PORTORO



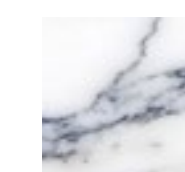
VERDE GUATEMALA



ROSSO LEVANTO



ARABESCATO



ONICE BIANCO



SODALITE BLU





NISYROS

+ Technical Info



00002A



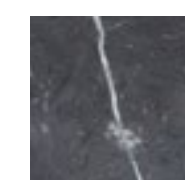
00002B

MARBLES

BIANCO MICHELANGELO



NERO MARQUINIA





MYRON

PIATTO PIANO  
#1/#2/#3

MYRON



00006A



00006B

PIATTO PIANO  
#1/#2/#3

Technical Info [+](#)

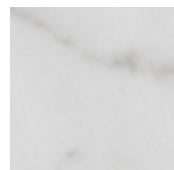


00003A/00003F

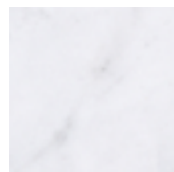


00003B

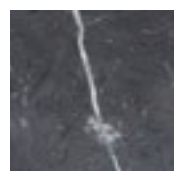
MARBLES



BIANCO  
MICHELANGELO



BIANCO CARRARA



NERO MARQUINIA



00004A/00004F



00004B



00005A/00005F



00005B





## DESIGNER

---

## BEC BRITTAIN

For her, design is a true kind of love: Bec Brittain studied product design at Parsons School of Design and philosophy at NYU before graduating in architecture at the Architectural Association School of Architecture in London. She later returned to New York to work with the renowned WORKac. Driven by a passion for small-scale production and the use of elegant materials, in 2008 she was named design director of the prestigious Lindsey Adelman Studio.

In 2011, Brittain founded her own brand, which was greatly acclaimed right from the start for the magnificent blend of technology, architecture and materials that creates defined, luxe and indubitably innovative objects.



## HERON

BEC BRITTAIN

Lightness and vitality. Bec Brittain's study of weights and proportions wasn't meant to be a pure sculptural exercise but, rather, aimed to make marble more her own, an everyday material.

With its inner light, "Heron" glides over the desk or table in an elongated, slightly angular shape reminiscent of the bird it draws inspiration from even in its colors (white, ash grey, pink). "Heron" sees with the eyes of the soul, with the intimate light of marble.





HERON

[+ Technical Info](#)



00063EPA



00063PBM

MARBLES

BIANCO MICHELANGELO



ROSA EGITTO



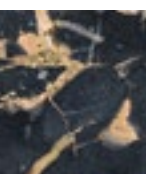
FIOR DI PESCO CARNICO



NERO MARQUINIA



NERO PORTORO





**DESIGNER**

---

## NIKO KORONIS

Niko Koronis graduated in architecture from the Welsh School of Architecture, where a year later he did his Master degree in Environmental Design of Buildings.

He then moved to Milan, where he attended Domus Academy and obtained the Master in Design with distinction. He spent a year as the Master's Design Tutor, after which he studied for his Phd in Architecture at the Architectural Association in London. He has been a Fellow at Central Saint Martins and a researcher at the Alvar Aalto Foundation in Helsinki. He has taught, lectured and undertaken research in architecture, urban and product design in several universities throughout the world and has taken part in several exhibitions, amongst which the Venice Biennale and the Triennale di Milano.



## BRUCHI

NIKO KORONIS

Normally, we think of marble as a metamorphic rock that embodies the platonic idea of sculpture; the beginning and the end. But what if one tried to investigate its limitations and manufacturing process for just a moment? What would we get if we treated it like an extrusion material, almost as if it were aluminium, copper, etc? That's just what Niko Koronis did, defying the production and materiality of marble. Living matter that becomes a vehicle, "Bruchi" is the result of a total aesthetic subtraction – no superfluous decorations, an archaic shape for an abstract light.





---

BRUCHI

---

Technical Info [+](#)

MARBLES



ROSSO LEVANTO



VERDE IMPERIALE



00062R



00062G



00062Rr



00062Rb





## ARCHITECT

---

### VENELIN KOKALOV (REVERY ARCHITECTURE)

Architect Venelin Kokalov was born and raised in Bulgaria; in 2002 he immigrated to Canada. Today, Venelin leads Revery Architecture, a Vancouver-based, internationally recognized practice with focus on cultural, academic, and community buildings. The firm's name reflects its mission: to create a harmony balance between creative reverie and technical precision in every project.

With a background firmly rooted in art and craftsmanship, Venelin is respected for his distinctive ability to seamlessly weave together established and emerging technologies in engaging and innovative ways. Whether he is designing a concert hall, a high-rise residential tower, a piano, or a table, his approach focuses on designing experiences—his work seeks to uplift the human spirit and improve quality of life.

Venelin's creative vision is evident in the Xiqu Opera House in Hong Kong, PNE Amphitheater in Vancouver, BC, Arena Stage Theatre in Washington, DC, University of Chicago Campus in Hong Kong, The Butterfly tower in Vancouver, BC, Simon Fraser University and Surrey City Centre Library in Surrey, BC, and the Fazioli Butterfly Piano, amongst others.



## LUNA TABLE

VENELIN KOKALOV

Inspired by the Roman goddess of the moon, Luna is an elegant table consisting of two separate but complementary pieces. Together, the two components trace a graceful arc reminiscent of the moon's path across the night sky.

The piece embodies a sense of lightness; at the same time, its organic form highlights the marble's unmistakable materiality. In this duality, Luna embodies a peaceful harmony that is at once calming and uplifting.



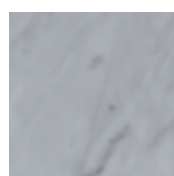


LUNA TABLE

Technical Info [+](#)



MARBLES



BIANCO  
CARRARA



VERDE  
LUANA

000105FVL







## MATTEO CIBIC

Matteo Cibic is an Italian designer and creative director. He is known for his objects with hybrid functions and anthropomorphic and joyful shapes. He works indiscriminately with industrial processes and small artisans, for luxury brands, collectors and hi-tech companies. His most known projects are the Domsai terrariums, 10A clothing range, VasoNaso research into objects, and the Tim Towers in Rome. His works are displayed in museums, institutions and galleries worldwide.

Matteo is an international award winning designer, and his work is published internationally. He has been awarded International Young Talent of the Year 2017 by Elle Decor.

DESIGNER

---



## HOMAGE COLLECTION

MATTEO CIBIC

Form follows Cibic's ideas, who never compromises on anthropomorphism and joy, recalling the ancient faces of tribal sculptures, masks and idols. With – Homage – he conjures African Art embraced by Amedeo Modigliani, the painter and sculptor from Livorno capable of “allowing the lines to emerge”. Lines that fascinate Cibic, who from a vase creates a cheerful face offset by protruding ears; a fruit bowl inspired by a tribal mask; and a cake stand in Red Levanto can be a flag with White Michelangelo and Black Marquinia, as if suggesting that the merger of opposites were possible. And how: the colours and marbles in Cibic's pieces, tell of lucky encounters and happy times, celebrated by unforgettable objects.





PIETRO

[+ Technical Info](#)



00051AR



00051ARB



00051ABA



00051ABR

MARBLES

BIANCO MICHELANGELO



ROSSO LEVANTO



NERO MARQUINIA

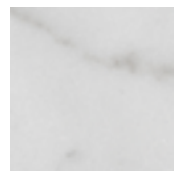




TACCA

Technical Info [+](#)

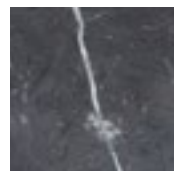
MARBLES



BIANCO MICHELANGELO



ROSSO LEVANTO



NERO MARQUINIA



00052BAR



00052ABA



00052BA





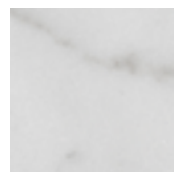
ORAZIO

Technical Info [+](#)



00050ABR

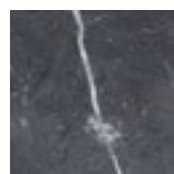
MARBLES



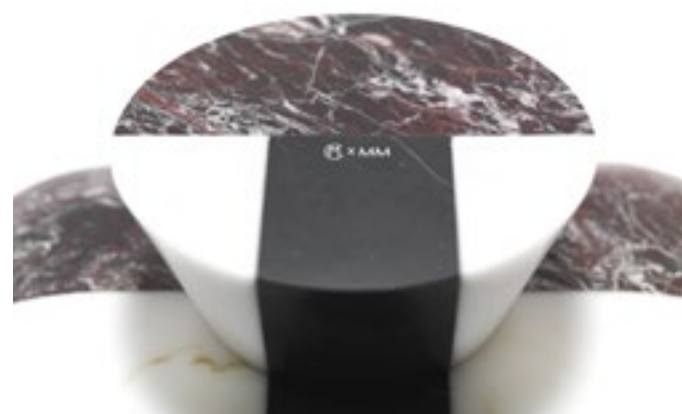
BIANCO  
MICHELANGELO



ROSSO LEVANTO



NERO MARQUINIA





ARTEMISIA

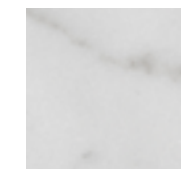
[+ Technical Info](#)



00076ABR

MARBLES

BIANCO MICHELANGELO



ROSSO LEVANTO



NERO MARQUINIA







ARTURO



00056RA

NARDO



00055AB

DOMENICO

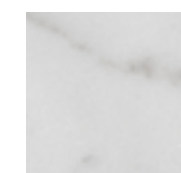


00057AB

[+ Technical Info](#)

MARBLES

BIANCO MICHELANGELO



ROSSO LEVANTO



NERO MARQUINIA





ROMEO



00075ABR

CARLO



00054AB

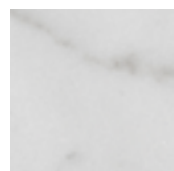
DANESE



00053BA

Technical Info [+](#)

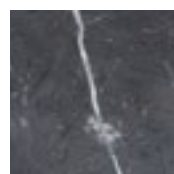
MARBLES



BIANCO MICHELANGELO



ROSSO LEVANTO



NERO MARQUINIA







## ARTHUR ARBESSER

Born and raised in the Austrian capital Vienna, Arthur Arbesser was deeply immersed in the city's culture. The streamlined turn-of-the-century architecture as well as the evocative heritage of applied arts and design remain a strong source of inspiration for the designer today. At Central Saint Martins College for Art and Design he quickly developed his personal aesthetics, influenced by his intimate contact with London's prolific art scene. Upon graduation he moved to Milan to work for Giorgio Armani for 7 years.

Arthur Arbesser launched his eponymous women's wear label in February 2013. He was one of the finalists at the second edition of the LVMH prize in 2015, and in June of the same year, he was invited to participate at the prestigious PITTI Immagine Fair in Florence as a women's wear guest designer. Besides his own namesake label he works as a creative consultant for other international brands and continuous high profile collaborations with the likes of Apple, Silhouette Eyewear, HEM furniture, the Vienna State ballet and the Berlin State Opera add a creative impulse to his universe. He establishes his own sophisticated style enhanced by vivid graphics and finest quality fabrics, his silhouettes radiate a pure, yet sensual appeal of modernity.

DESIGNER

---



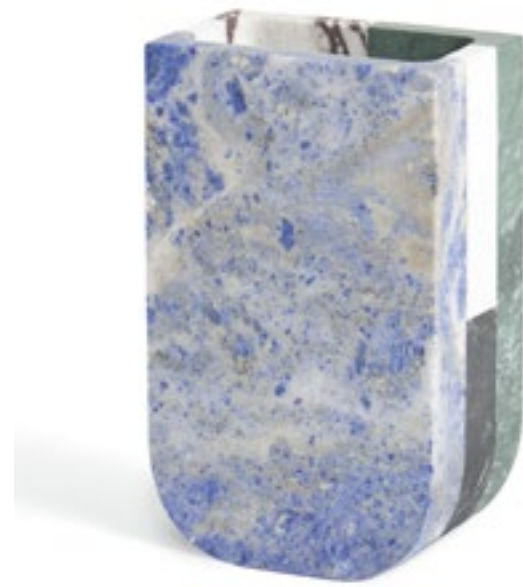
## MASTERS COLLECTION

ARTHUR ARBESSER

The history of design – often a synonym for *project* or *plan* – guides us through the philosophy of great masters whose far-ranging gazes allowed them to bring together past, present and future, to be scientific and creative alike, to invent without departing from their foundations. Arthur Arbesser's first collection for MMairo is dedicated to some of these masters. Viennese-born Arbesser – an *enfant prodige* in the fashion world and an elegant designer, he studied at London's Central Saint Martins College before moving to Milan, where he was appointed creative director of a renowned Italian fashion brand – is a free spirit. This shines through his collections, his wide-ranging interests (art and sculpture, ballet and theatre, drawing and architecture). In his designs, it is evident in his desire to dare and to create, to model shapes and blend colours as if he were saying: "Masters, I've learned from you!".



PIERO



00074MC

ALDO



00071MC

GAE S



00072BAG

GAE L



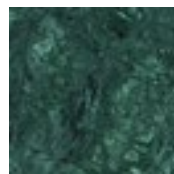
00073MC

Technical Info +

MARBLES



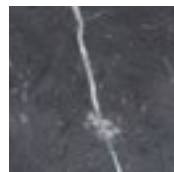
BIANCO MICHELANGELO



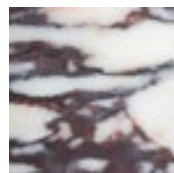
VERDE GUATEMALA



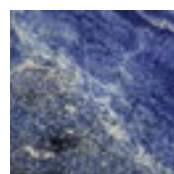
ROSSO LEVANTO



NERO MARQUINIA



ARABESCATO VAGLI FILO ROSSO



SODALITE BLU







## CRAFTSMAN

---

## JACOPO SIMONETTI

Since he was born at the foot of Apuan Alps he was surrounded by white marbles, dusted craftsmen and used to hear the music of machines working that pure material. He gained craftsman experience in the workshops of his Pietrasanta, renowned center for marble working and sculpture. He furthered his studies at the Carrara Academy of Fine Arts, where he learned also to pair this exquisite material with modern design.

Jacopo Simonetti is a young talented designer that, in spite of its age, masters the matching of ideas, marbles and technology. His work stands out for the creation of products that combine classical simplicity and beauty with the dynamic and functional nature of modern design.



## ARMONIA

JACOPO SIMONETTI

Inspired by the captivating image that two contrasting elements can create, Jacopo Simonetti draws the lines of his new collection Armonia, a pleasing interplay of void and full that run over each other, in search of a balance, like notes agreeably arranged in a melody.

Vases and Lamps are designed with minimal forms, characterised by perfectly carved oval shapes, to convey a sense of elegance and lightness, as if they were suspended in the air, in a place far from time.

Intriguing accessories that shine through the ethereal nuances of Rosa Egeo marble, a precious material that makes us travel to Greece, the mythological land where this material is rooted.







ARMONIA LAMP

ARMONIA LAMP S



00101RE



00101X



00101B



00101M

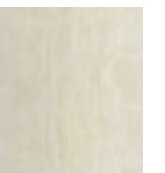
[+ Technical Info](#)

MARBLES

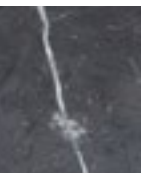
ROSA EGEO



ONICE BIANCO



NERO MARQUINIA



BIANCO ARABESCATO





ARMONIA LAMP

Technical Info [+](#)

ARMONIA LAMP L



00102RE



00102M



00102B

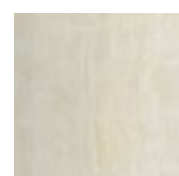


00102X

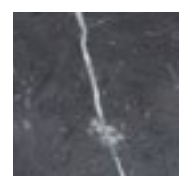
MARBLES



ROSA EGEO



ONICE BIANCO



NERO MARQUINIA



BIANCO ARABESCATO







ARMONIA VASE

ARMONIA VASE S



00103RE

00103X



00103B

00103M

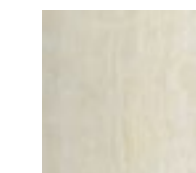
[+ Technical Info](#)

MARBLES

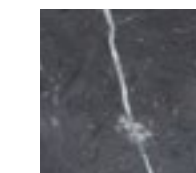
ROSA EGEO



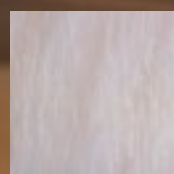
ONICE BIANCO



NERO MARQUINIA



BIANCO ARABESCATO





### ARMONIA VASE L

## ARMONIA VASE

Technical Info [+](#)



00104RE



00104X



00104B

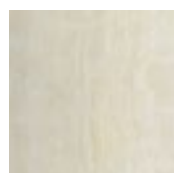


00104M

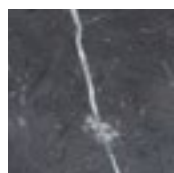
### MARBLES



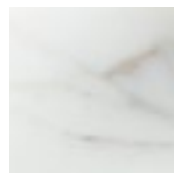
ROSA EGEO



ONICE BIANCO



NERO MARQUINIA



BIANCO ARABESCATO





## THE REEF LIGHT COLLECTION

JACOPO SIMONETTI

"The sculptor doesn't try to translate his thought into marble: he thinks in marble, directly, as if everything were already marble," wrote André Gide. His words perfectly sum up Jacopo Simonetti's work and style. The young designer has created a lightweight yet eternal lamp, vibrant and bright yet porous. He thought in marble, like someone who has long known and worked with this exquisite material, drawing inspiration from the gentle, sinuous lines of coral reefs. Marble and coral, both of them exquisite and delicate, elegant and natural materials. The result is a lamp whose light pairs with the uniqueness of marble to recreate the allure of the marine world for a cosy, exclusive ambience.







### GRAND REEF



00085AP

### LONE REEF



00083AP

### REEF



00084AP

[+ Technical Info](#)

#### MARBLES

FIOR DI PESCO  
CARNICO



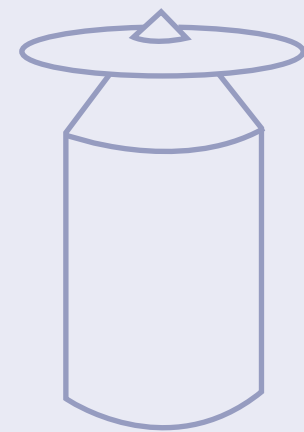
BIANCO  
MICHELANGELO



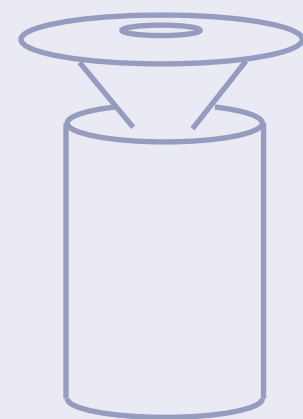


# KAREN CHEKERDJIAN

## TOTEM



POSITION 1



POSITION 2

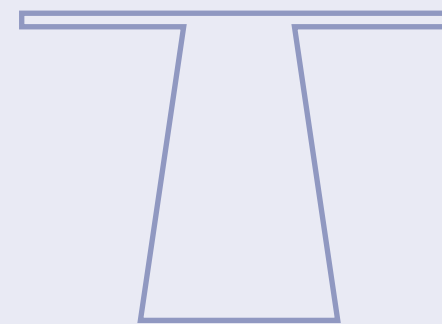
### TOTEM

Coffee Table  
Numbered Edition

Dimensions (cm):  
Ø 42 x 62 top Ø 42 x 2  
Dimensions (in):  
16.5 x 24.4

Pag. 6 -7

## INSIDE OUT COLLECTION

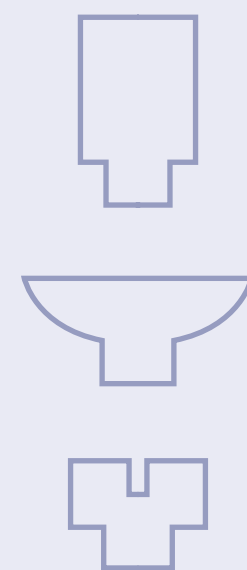


### INSIDE OUT SIDE TABLE

Coffe Table with Fruit Bowl,  
Flower Vase and Candle Holder

Base Table  
Dimensions (cm):  
58 x Ø 32 x Ø 70  
Dimensions (in):  
22.8 x 12.6 x 27.6  
Without the top element

Pag. 9

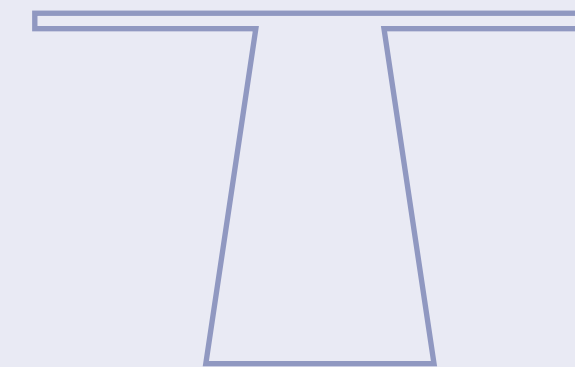


INSIDE OUT  
FLOWER VASE:  
8 x 24 cm | 3.1 x 9.4 in

INSIDE OUT  
FRUIT BOWL:  
31 x 14 cm | 12.2 x 5.5 in

INSIDE OUT  
CANDLE HOLDER:  
14 x 16 cm | 5.5 x 6.3 in

Pag.12

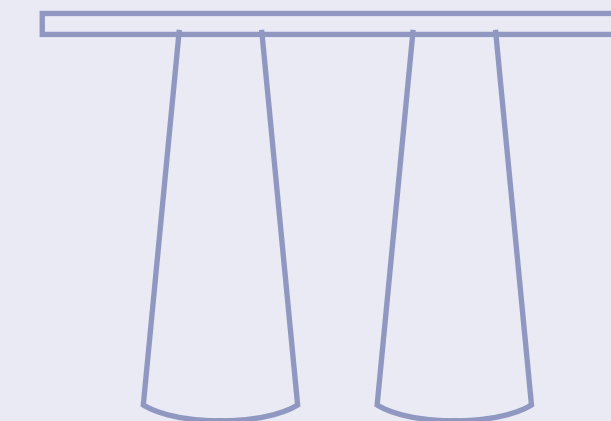


### INSIDE OUT DINING TABLE

Dining Table with with Fruit Bowl,  
Flower Vase and Candle Holder

Base Table  
Dimensions (cm):  
Ø top 120 x Ø base 44 x 74  
Dimensions (in):  
Ø top 47.2 x Ø base 17.3 x 29  
Without the top element

Pag. 10



### INSIDE OUT CONSOLE

Console with with Fruit Bowl,  
Flower Vase and Candle Holder

Base Table  
Dimensions (cm):  
120 x Ø base 36 x 90  
Dimensions (in):  
47.2 x Ø base 14.1 x 35.4  
Without the top element

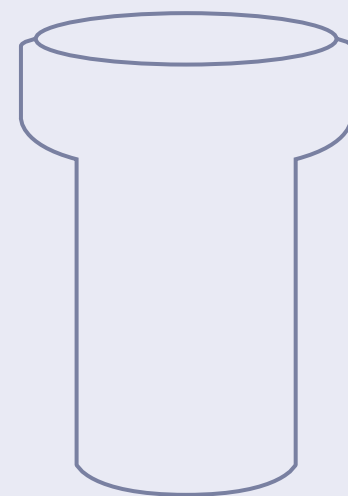
Pag.11



# IVAN COLOMINAS

## TIVOLI COLLECTION

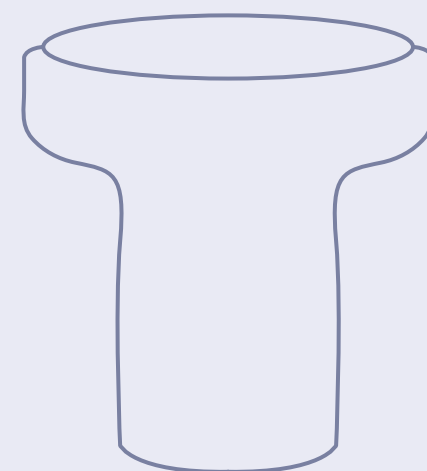
### TIVOLI TABLE



Tivoli Table S  
(Travertine/marble/wood)

Dimensions (cm):  
38 x 50  
Dimensions (in):  
14.9 x 19.6

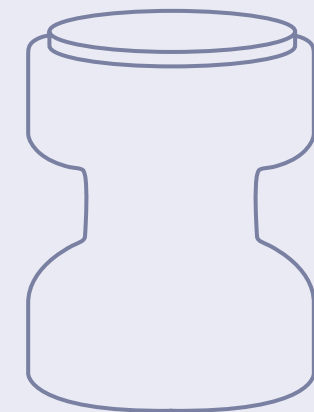
Pag. 16



Tivoli Table L  
(Travertine/marble/wood)

Dimensions (cm):  
50 x 50  
Dimensions (in):  
19.6 x 19.6

Pag. 16

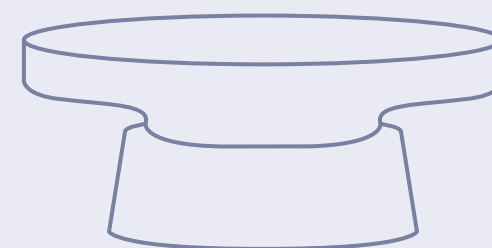


### TIVOLI STOOL

Tivoli Stool  
(Travertine/marble/wood)

Dimensions (cm):  
35 x 42  
Dimensions (in):  
13.7 x 16.5

Pag. 17



### TIVOLI CENTREPIECE

Tivoli Centrepiece  
(Travertine/marble)

Dimensions (cm):  
37 x 14.5  
Dimensions (in):  
14.5 x 5.7

Pag. 18



### TIVOLI VASE

Tivoli Vase S  
(Travertine/marble/wood)

Dimensions (cm):  
14 x 25.7  
Dimensions (in):  
5.5 x 10.1

Pag. 19



Tivoli Vase L  
(Travertine/marble/wood)

Dimensions (cm):  
15 x 31.7  
Dimensions (in):  
5.9 x 12.4

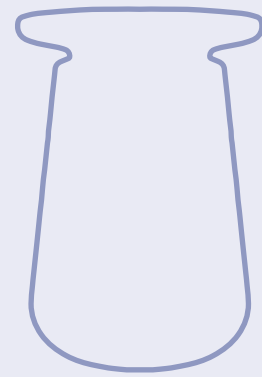
Pag. 19



# IVAN COLOMINAS

## ALTANA COLLECTION

### ALTANA SMALL



Side Table

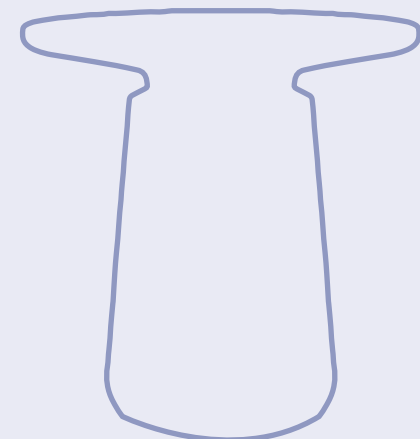
Dimensions (cm):

∅ 38 x 54 x ∅ Base 32

Dimensions (in):

14.9 ∅ (top) x 21.2 x 12.6 ∅ (base)

### ALTANA MEDIUM



Side Table

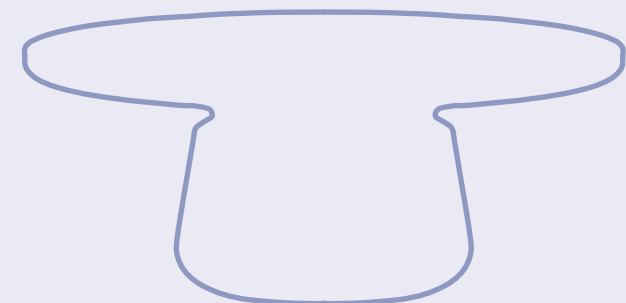
Dimensions (cm):

∅ 54 x 54 x ∅ base 32

Dimensions (in):

21.2 ∅ (top) x 21.2 x 12.6 ∅ (base)

### ALTANA LARGE



Side Table

Dimensions (cm):

∅ 75 x 36 x ∅ base 35.5

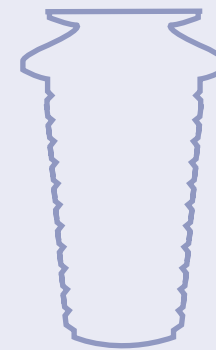
Dimensions (in):

29.5 ∅ (top) x 14.2 x 14 ∅ (base)

[Pag. 21](#)

## CAPUA COLLECTION

### CAPUA



Vase

Dimensions (cm):

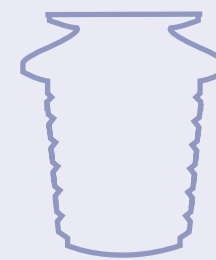
(L) 19 x 32

(M) 19 x 23.5

Dimensions (in):

(L) 7.5 x 12.6

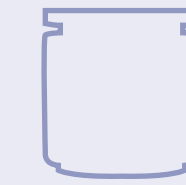
(M) 7.5 x 9.3



[Pag. 22](#)

## PYXIS COLLECTION

### PYXIS



Pots

Dimensions (cm):

(S) 12.6 x 11

(M) 12.6 x 14.5

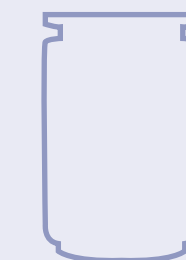
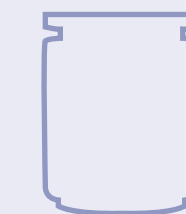
(L) 12.6 x 19

Dimensions (in):

(S) 5 x 4.3

(M) 5 x 5.7

(L) 5 x 7.5



[Pag. 23](#)



# IVAN COLOMINAS

## MATERIA E TAVOLA COLLECTION



### AMALTEA

Centerpiece

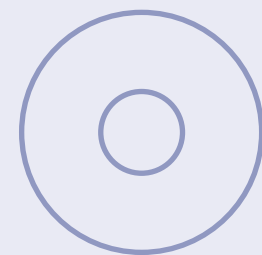
Dimensions (cm):

36.5 x 10

Dimensions (in):

14.4 x 3.9

[Pag. 25](#)



### MYRON

Trivet

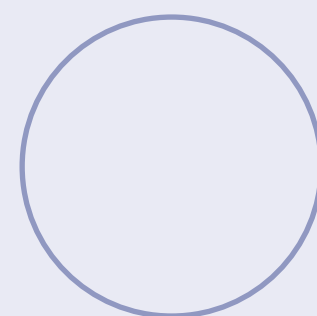
Dimensions (cm):

26 x 2

Dimensions (in):

10.2 x 0.8

[Pag. 26](#)



### NISYROS

Serving Plate

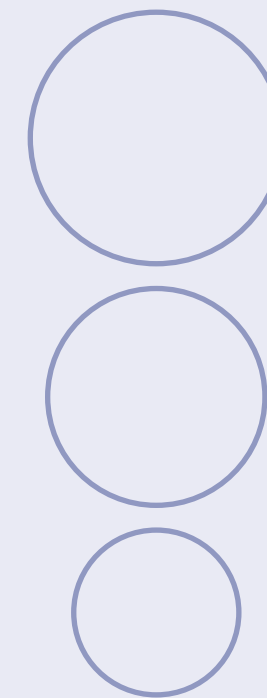
Dimensions (in):

15.7 x 0.9

Dimensions (cm):

40 x 2.2

[Pag. 27](#)



### PIATTO PIANO #1/#2/#3

Dining Plate/ Side Plate

Dimensions:

Piatto piano #2 (Dining Plate)

(cm) 29 x 2.1

(in) 11.4 x 0.8

Piatto piano #1 (Dining Plate)

(cm) 25 x 2

(in) 9.8 x 0.8

Piatto piano #3 (Side Plate)

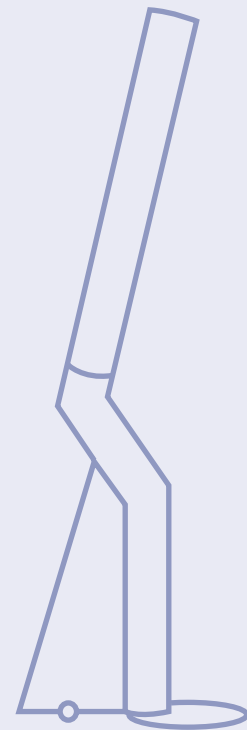
(cm) 19 x 1.2

(in) 7.5 x 0.5

[Pag. 28](#)



## BEC BRITAIN



### HERON

Table Lamp

Dimensions (cm):

18 x 85, Ø 6

Dimensions (in):

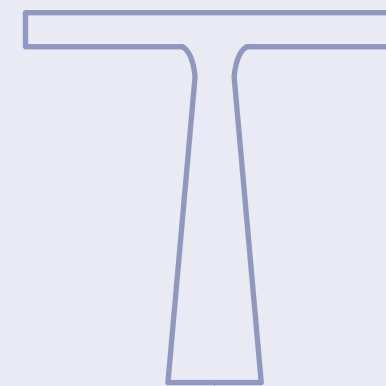
7 x 2.4 x 33.5

The lamp electrical components are UL certified for sales outside EU.

The Lamp are CE Certified for sales inside EU.

Pag. 31

## NIKO KORONIS



### BRUCHI

Table Lamp

Dimensions (cm):

37.5 x 7 x 35

(without base)

Dimensions (in):

14.8 x 2.8 x 13.8

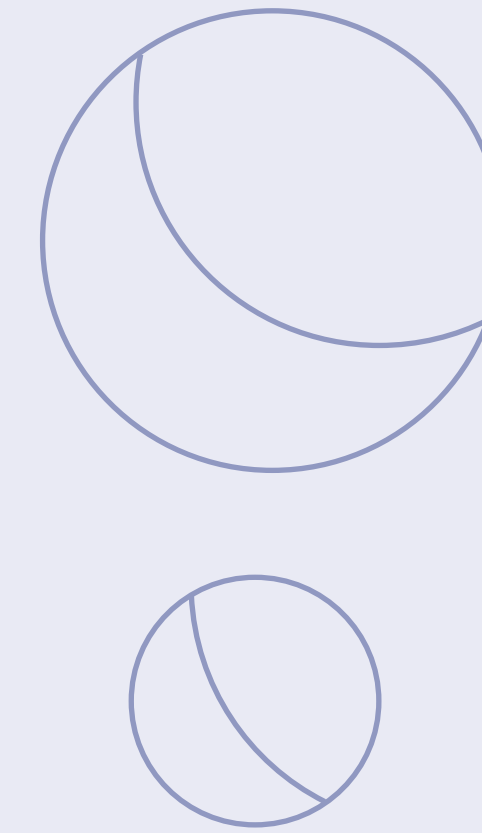
(without base)

The lamp electrical components are UL certified for sales outside EU.

The Lamp are CE Certified for sales inside EU.

Pag. 34

## VENELIN KOKALOV



### LUNA TABLE

Table L

Dimensions (cm):

Ø 150 x 25

Dimensions (in):

Ø 59 x 9.8

Table S

Dimensions (cm):

Ø 81.6 x 17

Dimensions (in):

Ø 32.1 x 6.7

Pag. 37



# MATTEO CIBIC

## HOMAGE COLLECTION

### PIETRO

Vase

Dimensions (cm):  
27.3 x 7.3 x 38.4  
Dimensions (in):  
10.7 x 2.9 x 15.1

[Pag. 37](#)



### ORAZIO

Centerpiece

Dimensions (cm):  
48 x 35.6 x 14.8  
Dimensions (in):  
18.9 x 14 x 5.8

[Pag. 39](#)

### NARDO

Small Vase

Dimensions (cm):  
11.7 x 4 x 17  
Dimensions (in):  
4.6 x 1.6 x 6.7

[Pag. 41](#)

### CARLO

Small Plate

Dimensions (cm):  
20.7 x 15 x 2  
Dimensions (in):  
8.1 x 5.9 x 0.8

[Pag. 42](#)

### ROMEO

Tray

Dimensions (cm):  
40 x 29 x 4  
Dimensions (in):  
15.6 x 11.4 x 1.6

[Pag. 42](#)

### TACCA

Vase

Dimensions (cm):  
38.2 x 7.3 x 23.4  
Dimensions (in):  
15 x 2.9 x 9.2

[Pag. 38](#)



### DOMENICO

Soap Holder

Dimensions (cm):  
20 x 9.8 x 3  
Dimensions (in):  
7.9 x 3.9 x 1.2

[Pag. 41](#)

### ARTURO

Small Vase

Dimensions (cm):  
16.3 x 4 x 10.6  
Dimensions (in):  
6.4 x 1.6 x 4.2

[Pag. 41](#)

### DANESE

Serving Plate

Dimensions (cm):  
40.7 x 30 x 3  
Dimensions (in):  
16 x 11.8 x 1.2

[Pag. 42](#)



### ARTEMISIA

Centerpiece

Dimensions (cm):  
60 x 35 x 12  
Dimensions (in):  
23.6 x 13.8 x 4.7

[Pag. 40](#)



# ARTHUR ARBESSER

## MASTERS COLLECTION

### PIERO

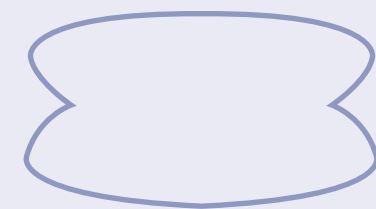


Vase

Dimensions (cm):  
20 x 12 x 32  
Dimensions (in):  
7.9 x 4.7 x 12.6

[Pag. 45](#)

### ALDO



Centerpiece

Dimensions (cm):  
36 x 10  
Dimensions (in):  
14.2 x 3.9

[Pag. 45](#)

### GAE L



Bowl L

Dimensions (cm):  
22 x 11.5  
Dimensions (in):  
8.7 x 4.5

[Pag. 45](#)

### GAE S



Bowl S

Dimensions (cm):  
13.5 x 7  
Dimensions (in):  
5.3 x 2.8

[Pag. 45](#)



# JACOPO SIMONETTI

## ARMONIA

### ARMONIA LAMP

Lamp L

Dimensions (cm):  
12 x 80  
Dimensions (in):  
4.7 x 31.5

Pag. 49



Lamp S

Dimensions (cm):  
10 x 55  
Dimensions (in):  
3.9 x 21.7

Pag. 48



### ARMONIA VASE

Vase L

Dimensions (cm):  
10 x 53  
Dimensions (in):  
3.9 x 20.9

Pag. 51



Vase S

Dimensions (cm):  
6.5 x 35.5  
Dimensions (in):  
2.6 x 13.8

Pag. 50



## THE REEF LIGHT COLLECTION

### GRAND REEF

Floor Lamp

Dimensions (cm):  
28 x 143.5  
Dimensions (in):  
11 x 56.5

Pag. 53



### REEF

Table lamp

Dimensions (cm):  
28 x 48.5  
Dimensions (in):  
11 x 19.1

Pag. 53



### LONE REEF

Table lamp

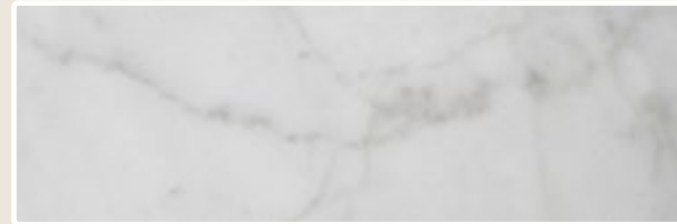
Dimensions (cm):  
15 x 48.5  
Dimensions (in):  
5.9 x 19.1

Pag. 53





# MARBLES' LIST



**BIANCO MICHELANGELO**  
(CARRARA)



**BIANCO STATUARIO**  
(CARRARA)



**BIANCO CARRARA**  
(CARRARA)



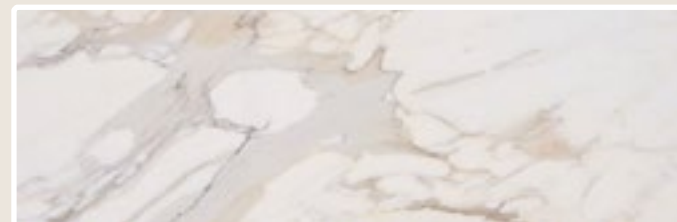
**BIANCO ARABESCATO**  
(CARRARA)



**ARABESCATO VAGLI FILO ROSSO**  
(CARRARA)



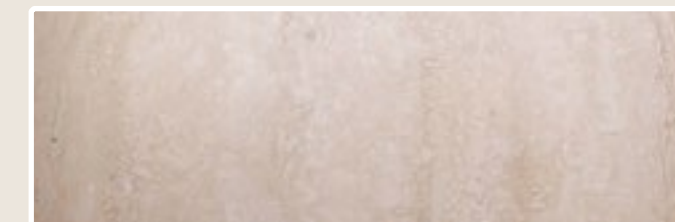
**NERO ANTICO**  
(FRANCE)



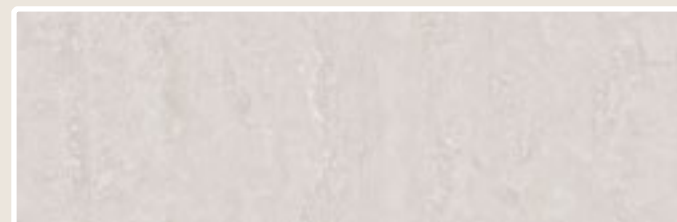
**CALACATTA ORO VAGLI**  
(CARRARA)



**CALACATTA ORO**  
(CARRARA)



**TRAVERTINO**  
(LAZIO - ITALY)



**TRAVERTINO NAVONA**  
(TALY)



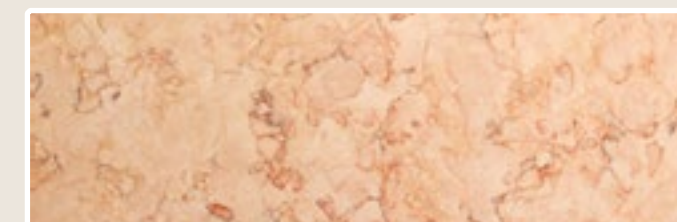
**ONICE BIANCO**  
(MEXICO)



**ONICE BIANCO**  
(TURKEY)



**FIOR DI PESCO CARNICO**  
(NORTHERN EAST OF ITALY)



**ROSA EGIZIANO**  
(EGYPT)



**ROSA EGEO**  
(GREECE)



# MARBLES' LIST



**ONICE MARRONE**  
(PAKISTAN)



**GIALLO SIENA**  
(SIENA - ITALY)



**BLACK AND GOLD**  
(PAKISTAN)



**NERO PORTORO**  
(LIGURIA - ITALY)



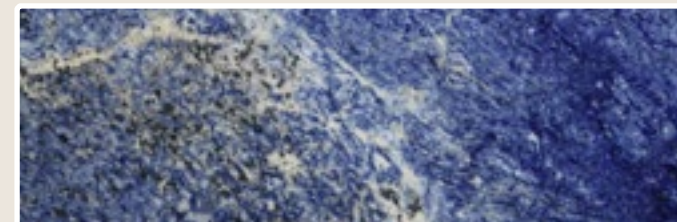
**ROSSO LEVANTO**  
(LIGURIA - ITALY)



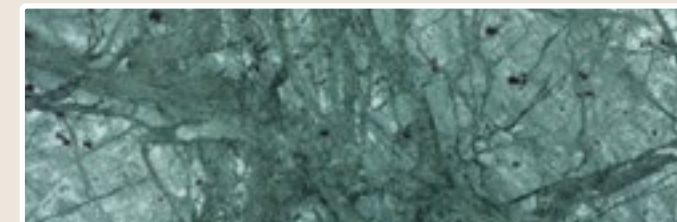
**ROSSO ALICANTE**  
(SPAIN)



**NERO MARQUINIA**  
(SPAIN)



**BLU SODALITE**  
(COLOMBIA)



**VERDE IMPERIALE**  
(NORTHERN ITALY)



**VERDE GUATEMALA**  
(GUATEMALA)



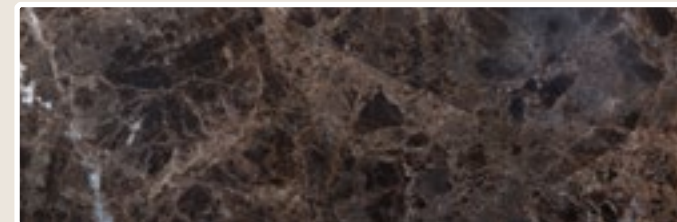
**VERDE LUANA**  
(ALPI APUANE ITALY)



**ONICE VULCANO**  
(MEXICO)



**TOBACCO BROWN**  
(CANADA)



**EMPERADOR DARK**  
(SPAIN)



**WALNUT WOOD**  
(ITALY)



## COLLABORATIONS

---





## SPECIAL COLLABORATIONS

How to Spend IT – FT  
November 26<sup>th</sup>, 2021

Photo: Michael Sinclair – Matteo Piazza  
Design: Nathalie du Pasquier  
Project curated by: Raboni Studio

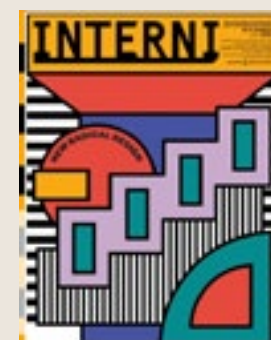
Nathalie du Pasquier, founding member of the '80s-defining Memphis Group, has been chosen by the art collector Valeria Napoleone to design four bespoke pieces for her home in London, a “little Guggenheim”, made up of over 450 artworks from various women of the world of art and design. MMairo had the honor to realize one of Nathalie’ pieces, an enchanting fireplace in Bianco Carrara marble.



### FIREPLACE IN BIANCO CARRARA MARBLE

designed by Nathalie du Pasquier  
for Valeria Napoleone - 2021

Also Published in the 2022 April issue of “Interni Magazine”





# PRESS

---

AD  
ARCHITECTURAL DIGES

ESPACES  
CONTEMPORAINS

FF

HOUSE  
& GARDEN

ICON  
DESIGN

IDEAT

INTERNI

iO  
DONNA

LA VANGUARDIA

label-magazine  
.com/  
L A B E L  
DESIGN MAGAZINE

CORRIERE DELLA SERA  
Living

marie claire  
Maison

NEST  
CASA

T  
THE NEW YORK TIMES  
STYLING  
MAGAZINE

Robb Report  
MAGAZINE FOR THE CONNOISSEUR

salepepe

Schön!

Sight  
Unseen

Tatler

THE  
CUBE

VOGUE  
LIVING

Wallpaper\*

WhitePaper  
by \_\_\_\_\_



## ABOUT US

*“ Thank you, we have received the package. They are too beautiful!!! Even better than the pictures! ”*

*“ Thank you so much, it was an absolute pleasure to deal with you. Every interaction and message was exemplary. The packaging and way it came were also flawless. Looking forward to shopping with you again! ”*

*“ My experience with the seller has always been excellent. As I always say I not only get excited with the product but also the way they package it by creating this wooden crates to house the product. No one else does it like MMAIRO. ”*

*“ Fabulous service fabulous product fabulous shipping! Thank you very much. ”*

*“ I am totally in love, it is beautiful, so well made and substantial. The wooden box was a total surprise for me, I am so impressed, since I am the type that always keeps original boxes and receipts. ”*

*“ I am absolutely in shock at how beautiful it is. I'm so impressed. Thank you so much for everything - I'm not just saying this, but dealing with you has honestly been one of the best sales experiences I've ever had. I'm blown away - every message, the item, the packaging - what a wonderful company you run. Looking forward to purchasing from you again! ”*

*“ The packaging was very protective and well executed. Once the item was completed, shipping was prompt. ”*

*“ Hello everyone. I just received my items which are absolutely stunning and the seller has been a delight. Highly recommend. ”*



